



The Stratford Hall

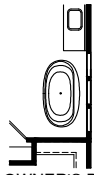


The Stratford Hall single-family home is where luxury lives. Enter the light-filled foyer, where an adjoining flex room offers versatility. The nearby formal dining room is ideal for any gathering. A tucked away study makes working from home easy. Off the 2-car garage, a family entry welcomes you to the gourmet kitchen, with an island overlooking the 2-story family room and dining area. Upstairs, 3 bedrooms include en-suite baths. Your luxury owner's suite features 2 enormous walk-in closets and a double vanity bath. Complete the lower level for more space and come home to The Stratford Hall.

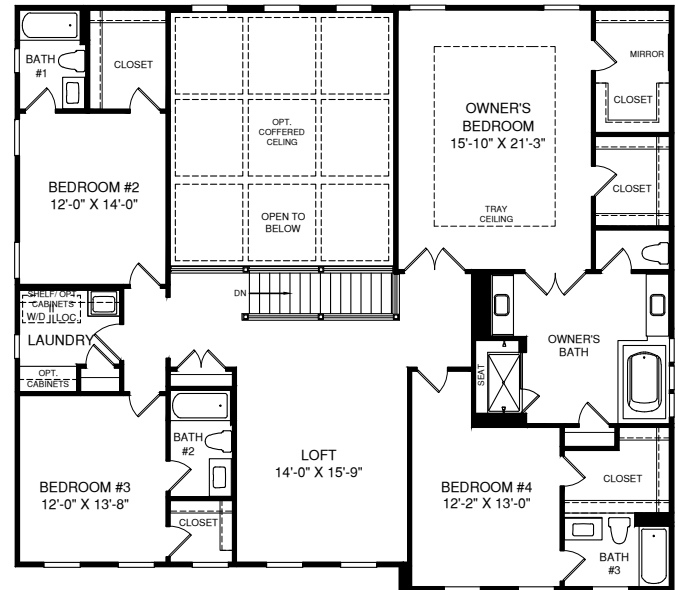
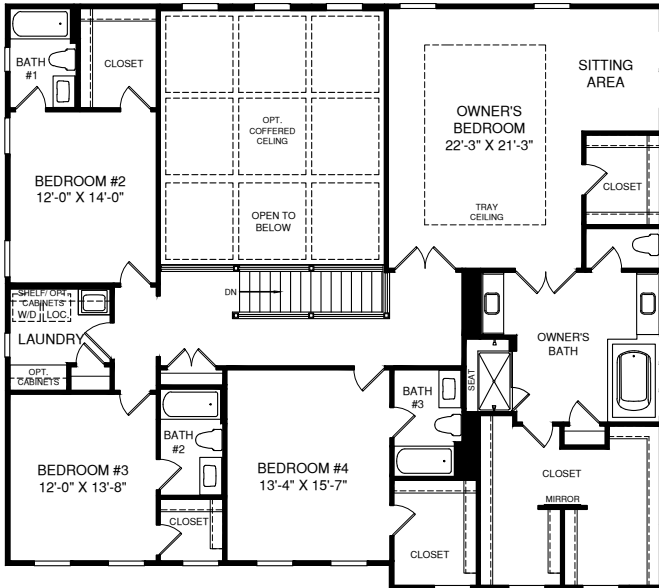
OPT. ONE CAR SIDE
ATTACHED GARAGE

The Stratford Hall

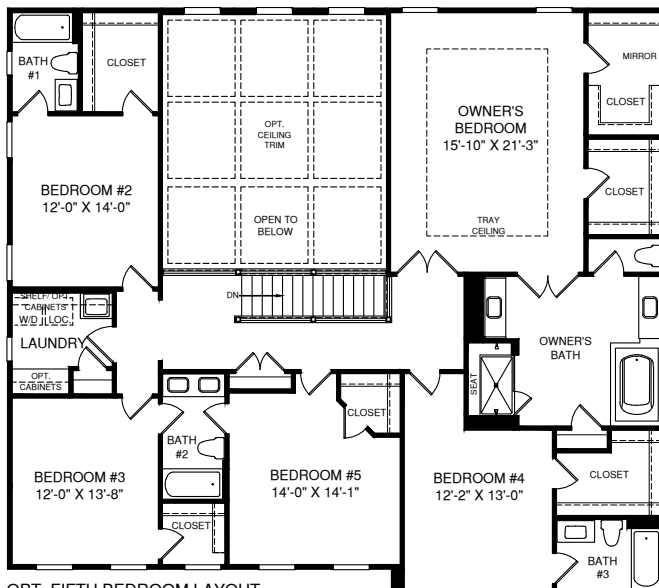
Upper Level



OWNER'S BATH W/ OPT.
FREESTANDING TUB &
ROMAN SHOWER



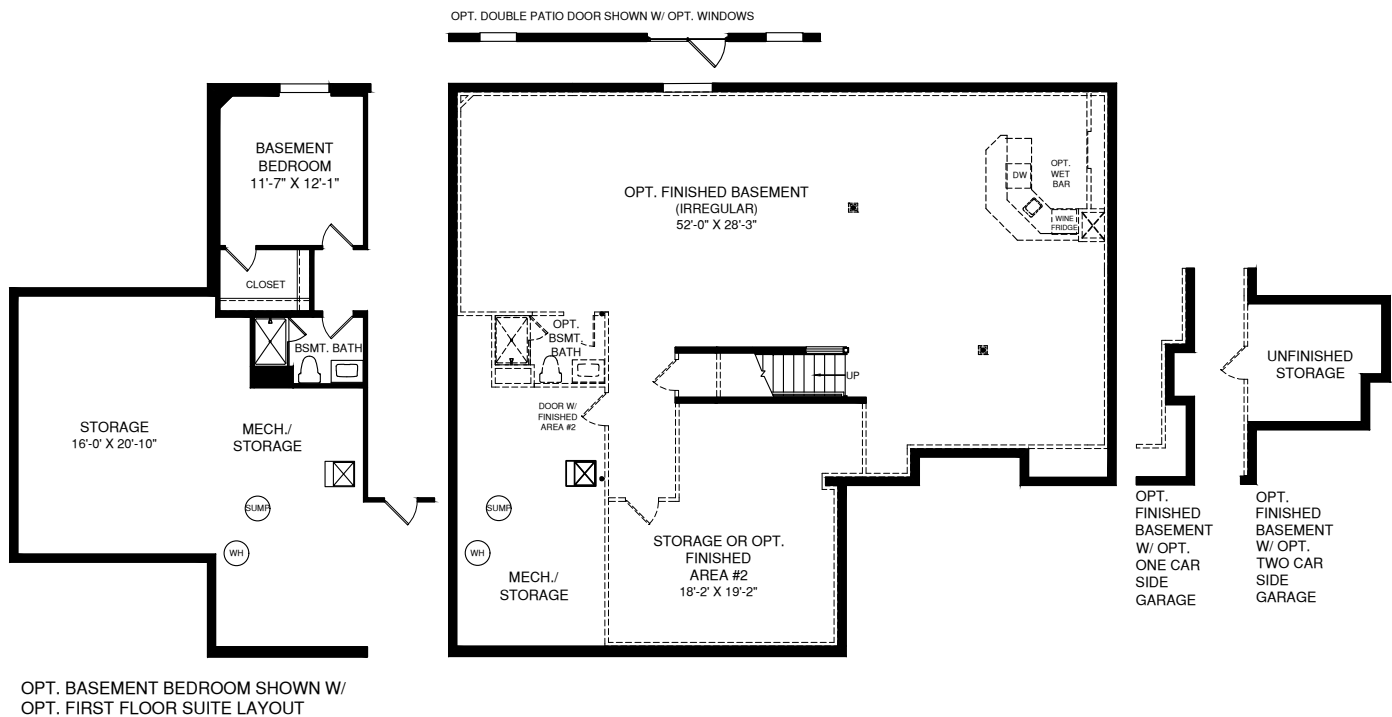
OPT. FOURTH BEDROOM W/ LOFT



OPT. FIFTH BEDROOM LAYOUT

The Stratford Hall

Lower Level



Although all illustrations and specifications are believed correct at the time of publication, the right is reserved to make changes, without notice or obligation. Windows, doors, ceilings, and room sizes may vary depending on the options and elevations selected. Optional items indicated are available at additional cost. This brochure is for illustrative purposes only and not part of a legal contract. It is recommended that the architectural blueprints be reserved for further clarification of features. Not all features are shown. Please ask our Sales and Marketing Representative for complete information. Elevations shown are artist's concepts. Floorplans may vary per elevation. NVHomes reserves the right to make changes without notice or prior obligation.

