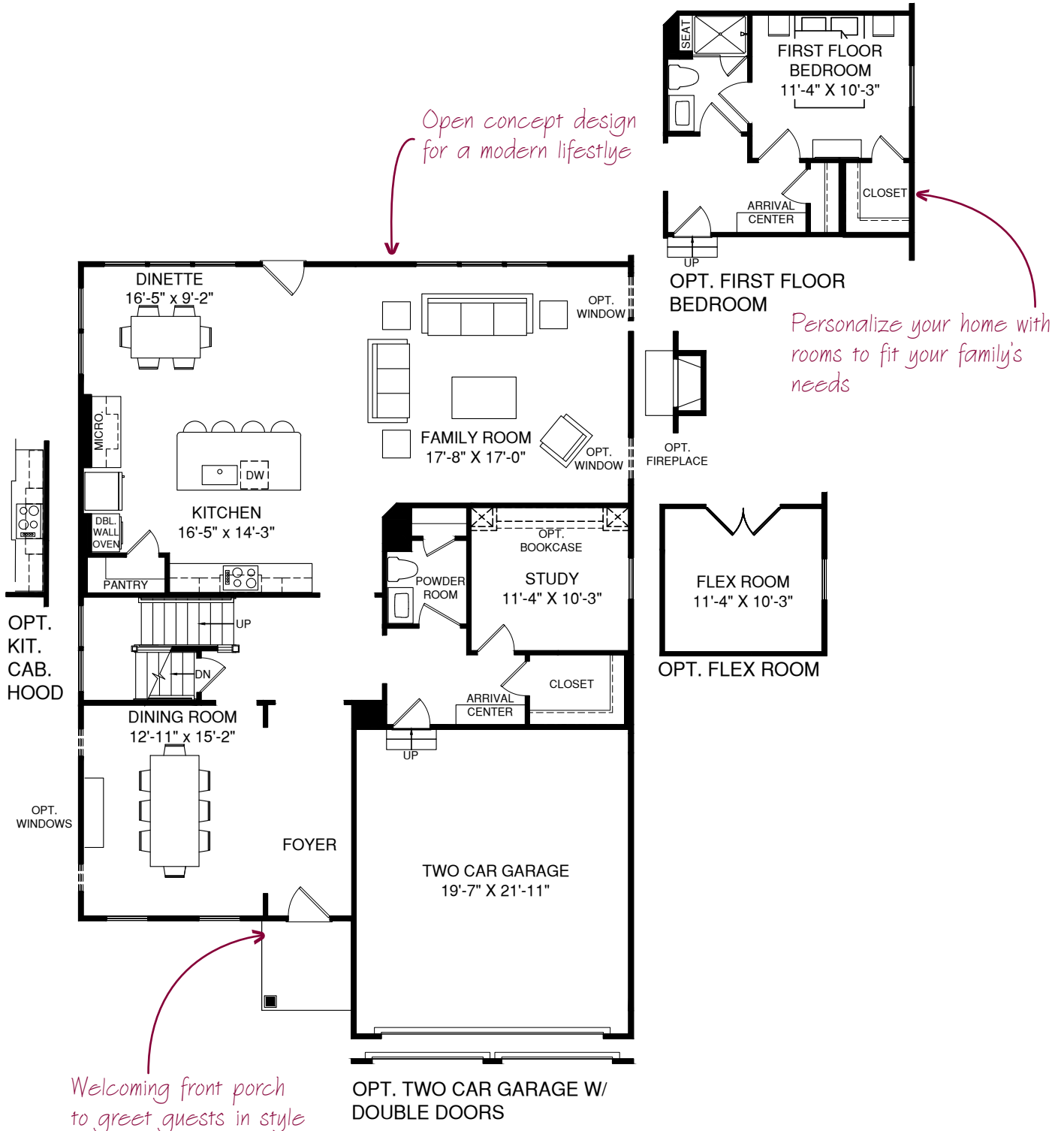
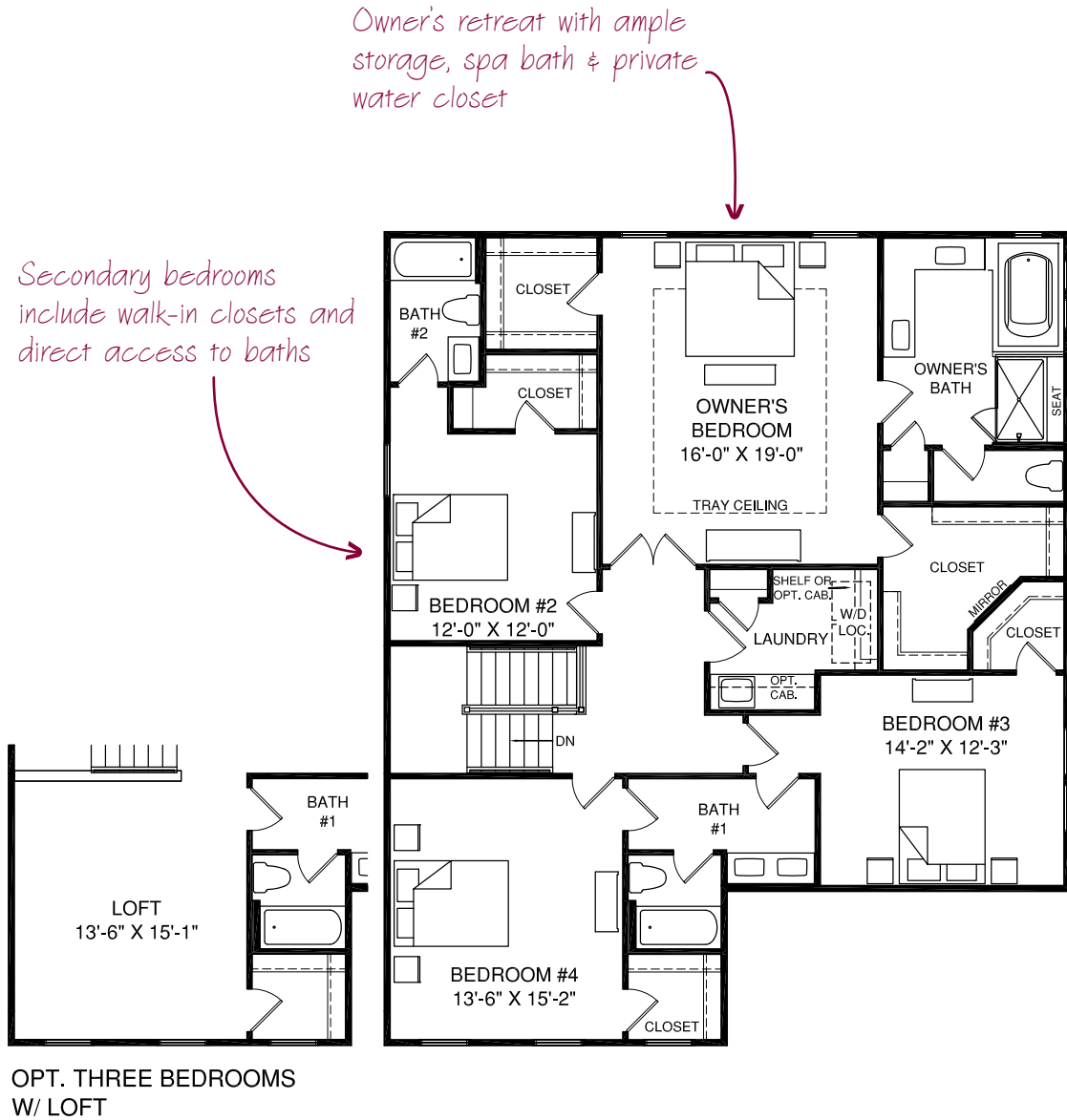


# MAIN LEVEL FLOOR PLAN



# UPPER LEVEL FLOOR PLAN



Owner's retreat with ample storage, spa bath & private water closet

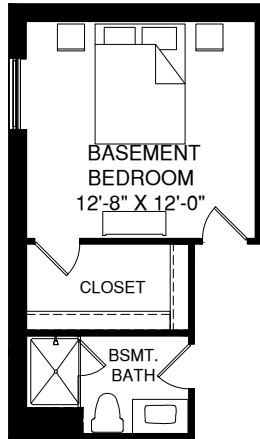
Secondary bedrooms include walk-in closets and direct access to baths

OPT. THREE BEDROOMS W/ LOFT

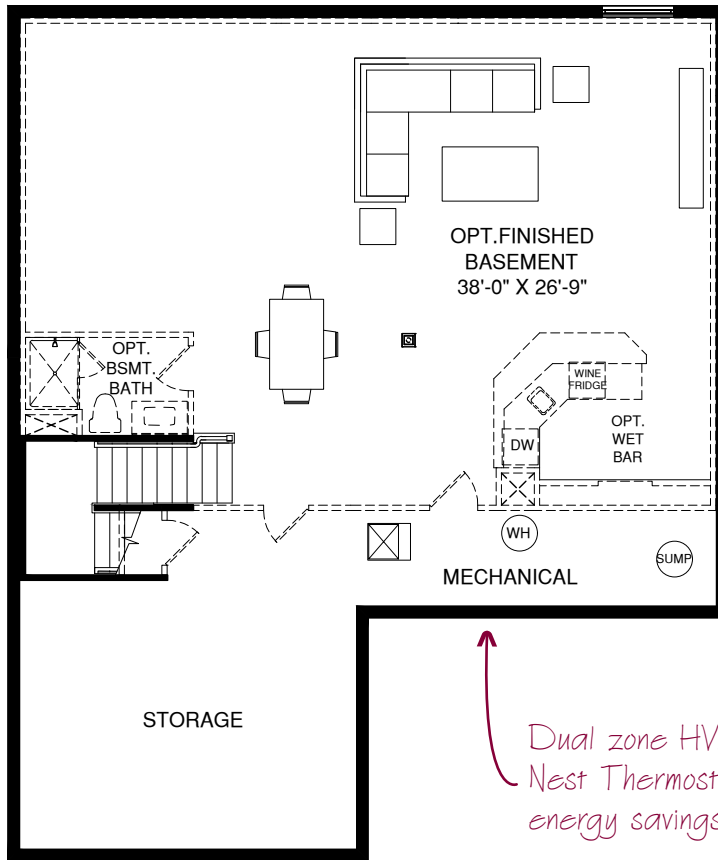
Loft offers extra play space, craft room, or storage

# LOWER LEVEL FLOOR PLAN

OPT. DOUBLE PATIO DOOR SHOWN WITH OPT. WINDOWS

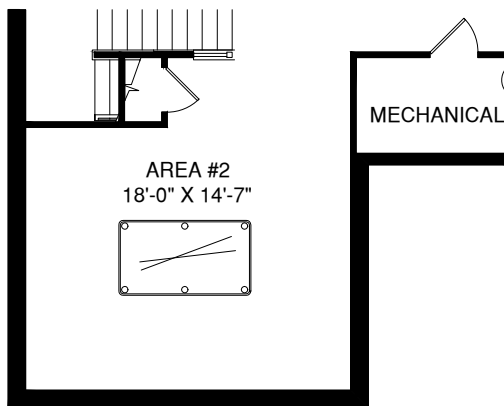


OPT. BASEMENT BEDROOM



With finished basement option, enjoy 9' ceilings and full bath

Dual zone HVAC and Nest Thermostats for energy savings and comfort



OPT. FINISHED BASEMENT AREA 2

## From the Architect

The Danville plan, while practical and efficient, provides a generous dining room, included study, and light filled family room.



NVHomes.com

NV01217DAN01BSMT

Although all illustrations and specifications are believed correct at the time of publication, accuracy cannot be guaranteed. The right is reserved to make changes, without notice or obligation. Windows, doors, ceilings and room sizes may vary depending on the options and elevations selected. Optional items are available at additional cost. This brochure is for illustrative purposes only and not part of a legal contract. Floor plan shown for Elevation A unless otherwise noted.

