

The CAPE CHARLES



Elevation A

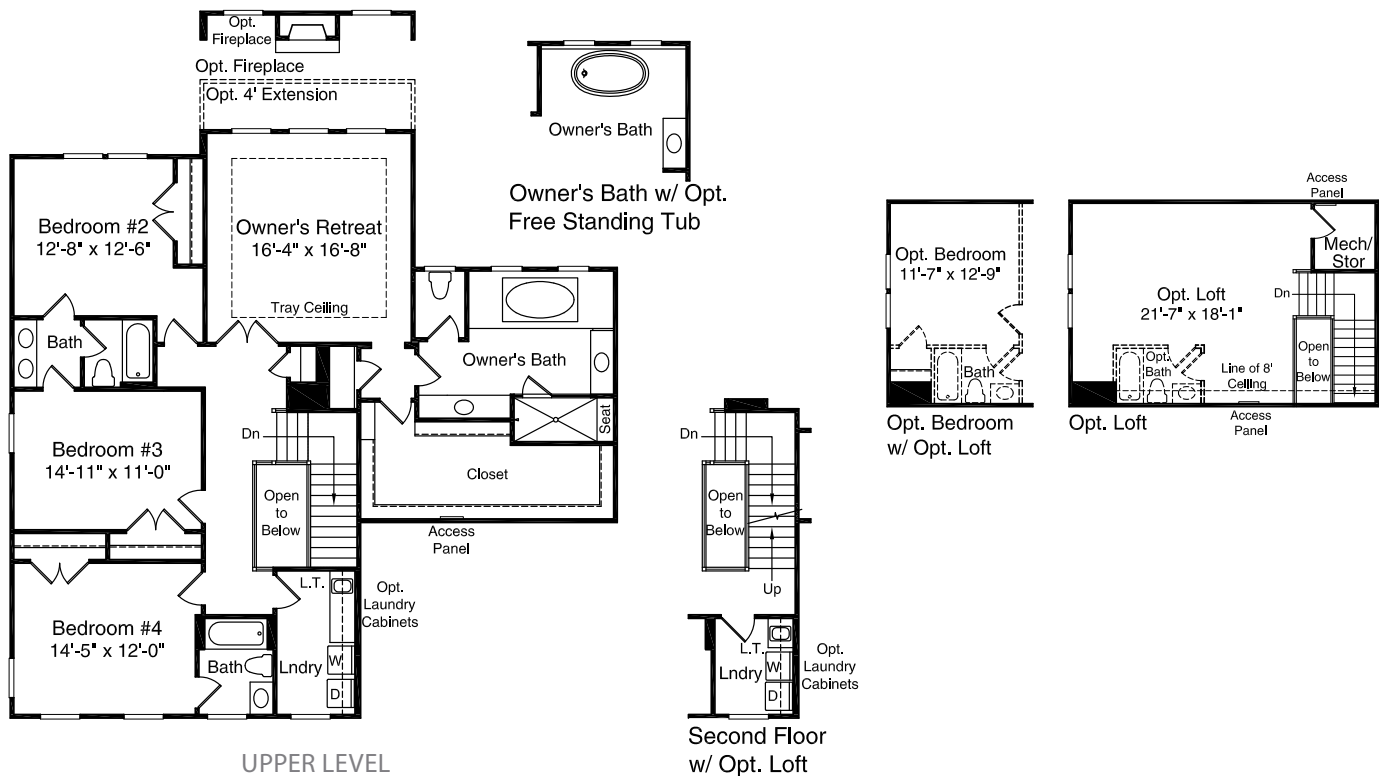
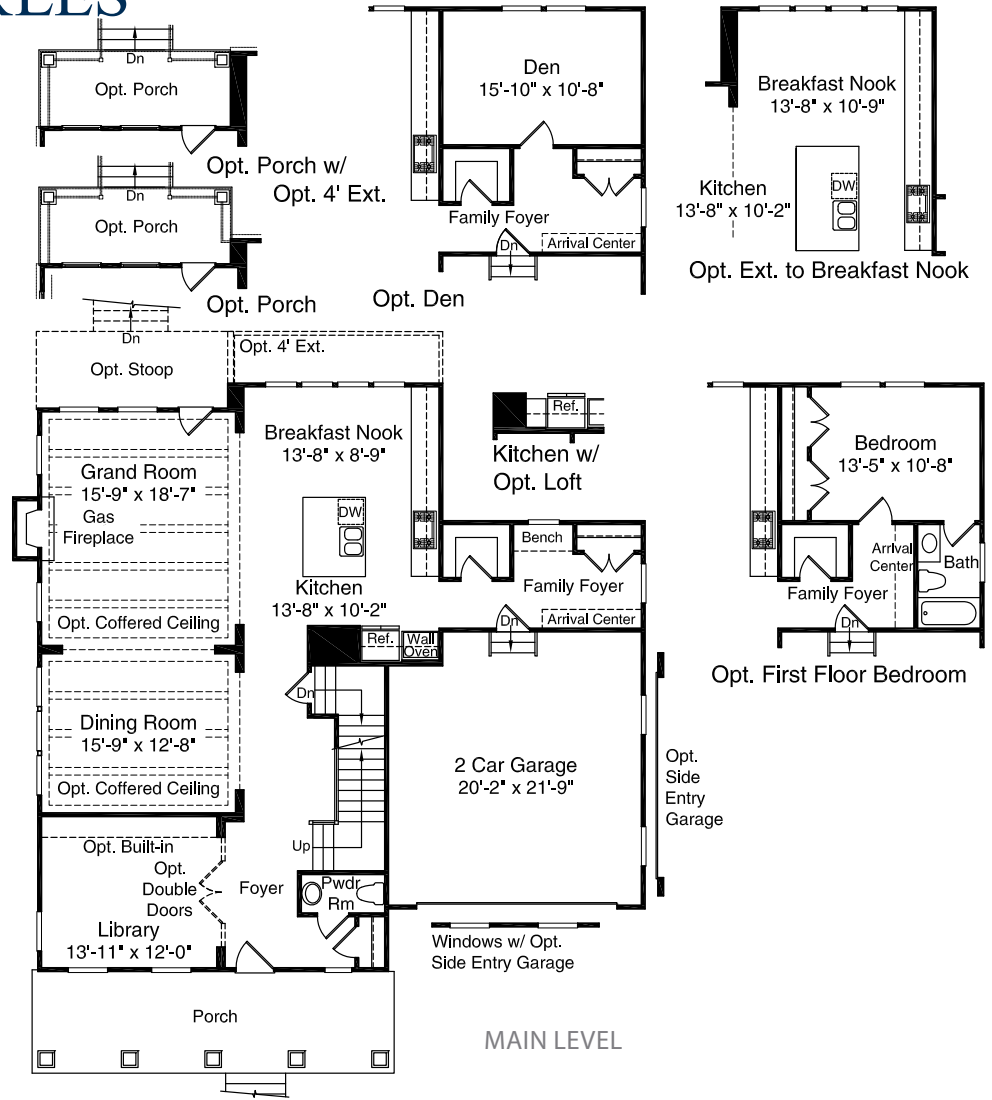


Elevation B

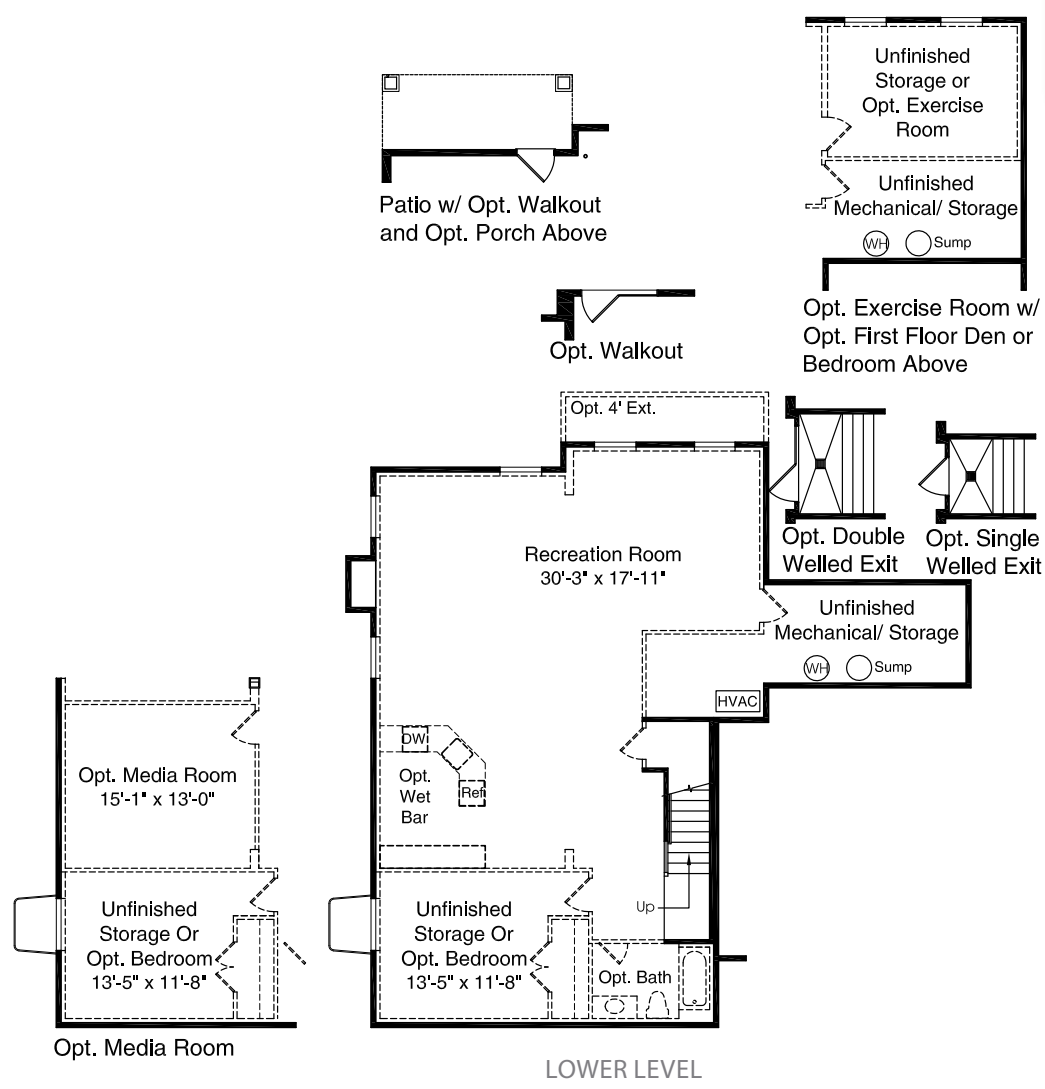


Elevation G

The CAPE CHARLES



- Approximately 3,120 Sq. Ft.
- Four Bedrooms
- Three and a Half Baths
- Front Porch
- Kitchen and Sunny Breakfast Nook
- Grand Room with Fireplace
- Dining Room and Library
- Optional In-Law Suite on Main Level
- Owner's Retreat with Spacious Walk-In Closet



LOWER LEVEL

Elevations shown are artist's conception. Floor plans may vary per elevation. NVHomes reserves the right to make changes without notice or prior obligations.

Although all illustrations and specifications are believed correct at the time of publication, the right is reserved to make changes without notice or obligation. Windows, doors, ceilings and room sizes may vary depending on the options and elevations selected. Optional items indicated are available at additional cost. This brochure is for illustrative purposes only and not a part of a legal contract. It is recommended that the architectural blueprints be reserved for further clarification of features. Not all features are shown. Please ask our Sales and Marketing Representative for complete information.





DESTINATION for a LIFETIME

www.PotomacShores.com

www.nvhomes.com

703-943-9117

