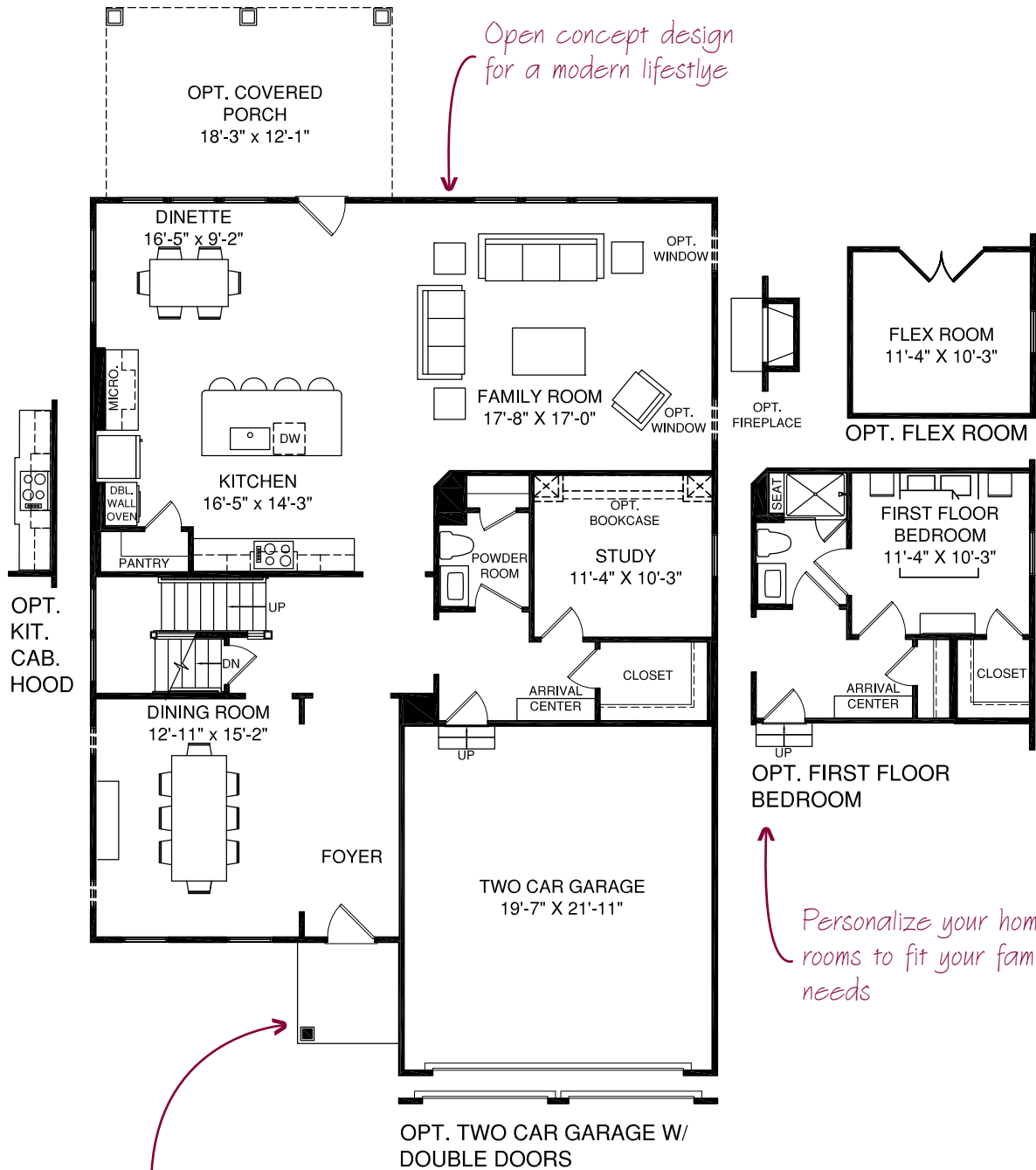


# MAIN LEVEL FLOOR PLAN



*Open concept design for a modern lifestyle*

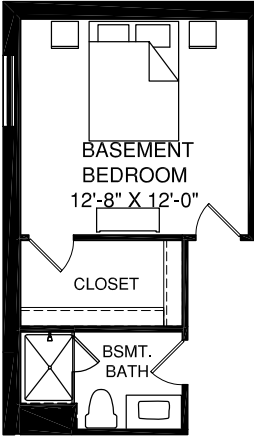
*Welcoming front porch to greet guests in style*

*Personalize your home with rooms to fit your family's needs*

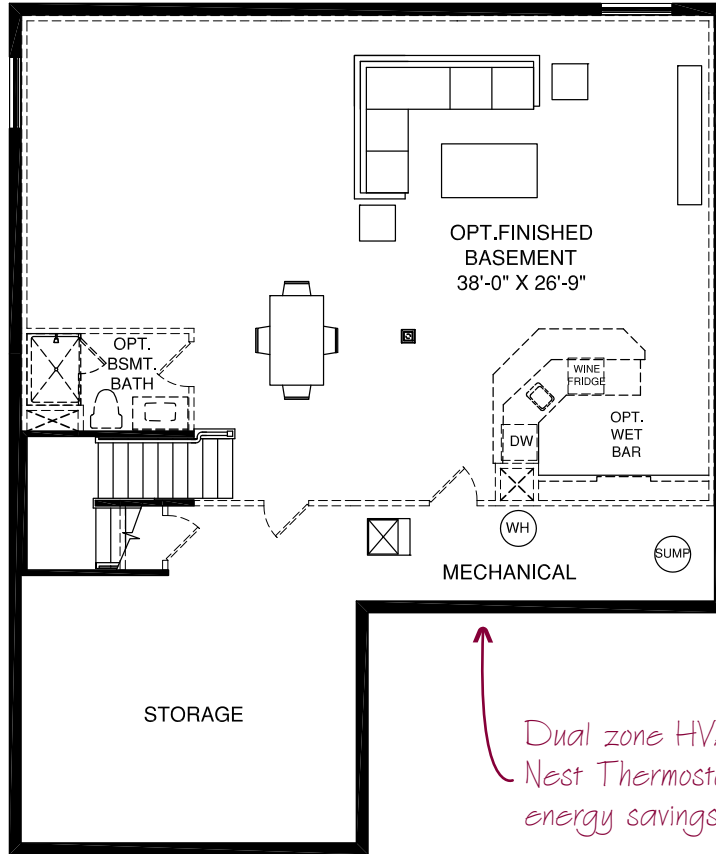


# LOWER LEVEL FLOOR PLAN

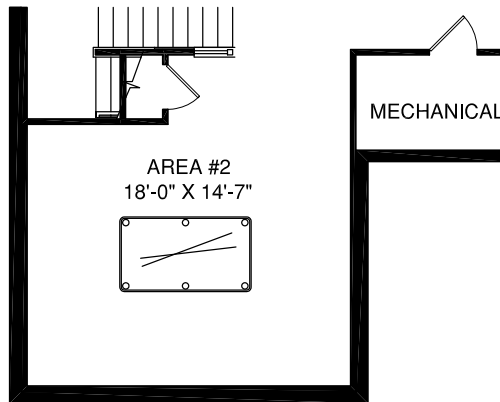
OPT. DOUBLE PATIO DOOR SHOWN WITH OPT. WINDOWS



OPT. BASEMENT BEDROOM



With finished basement option, enjoy 9' ceilings and full bath



OPT. FINISHED BASEMENT AREA 2

Dual zone HVAC and Nest Thermostats for energy savings and comfort

## From the Architect

The Danville plan, while practical and efficient, provides a generous dining room, included study, and light filled family room.



NVHomes.com

NV1016DAN01BSMT

Although all illustrations and specifications are believed correct at the time of publication, accuracy cannot be guaranteed. The right is reserved to make changes, without notice or obligation. Windows, doors, ceilings and room sizes may vary depending on the options and elevations selected. Optional items are available at additional cost. This brochure is for illustrative purposes only and not part of a legal contract. Floor plan shown for Elevation A unless otherwise noted.

