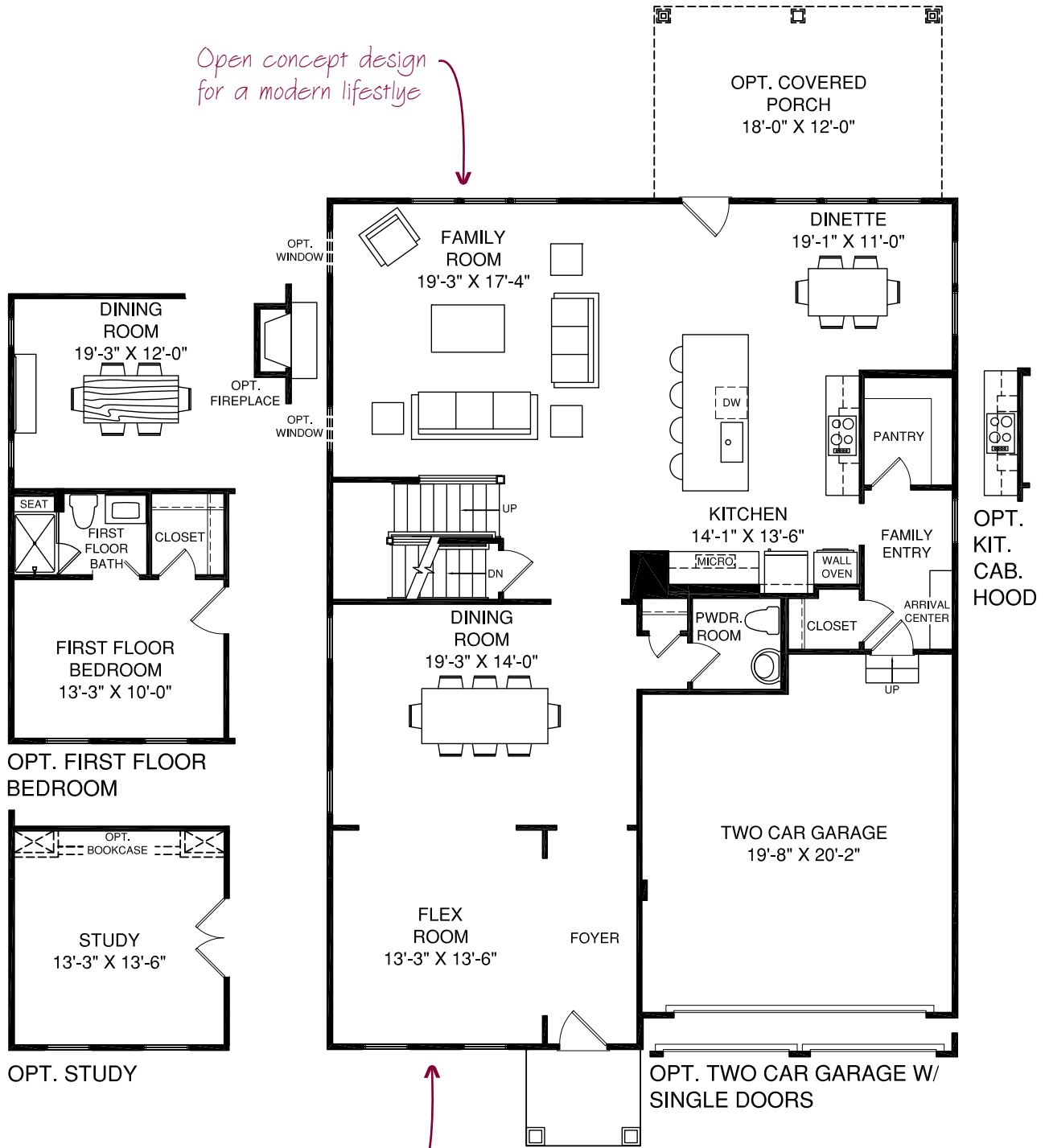


# MAIN LEVEL FLOOR PLAN



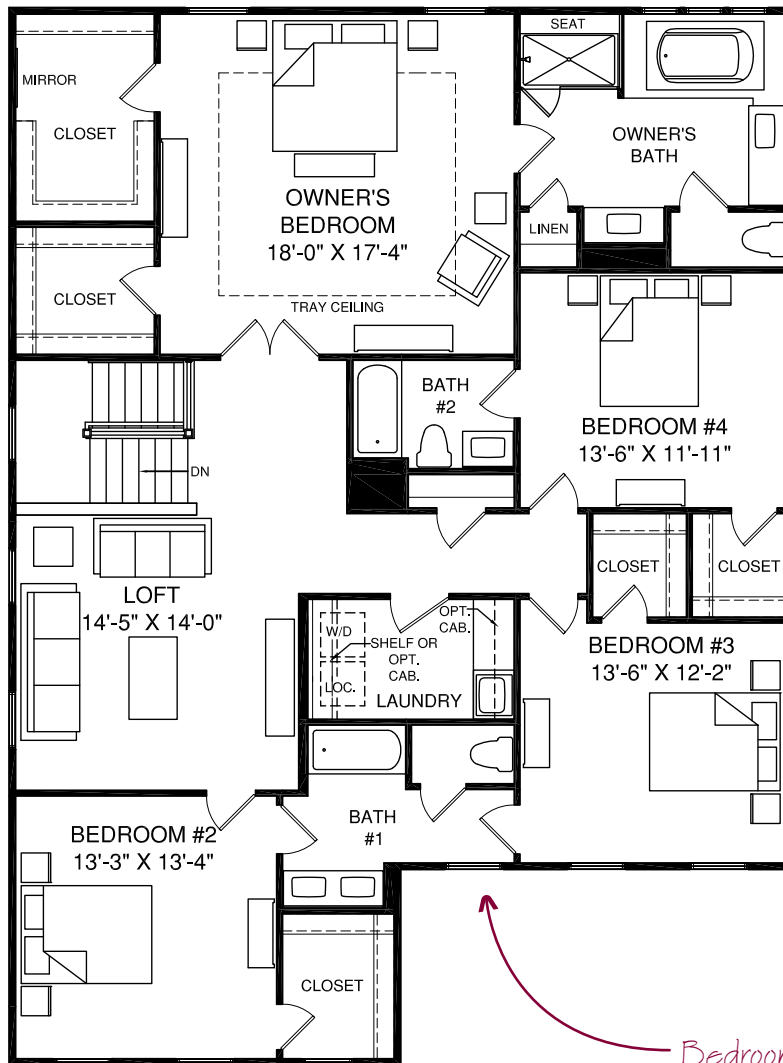
Open concept design for a modern lifestyle

Personalize your home with rooms to fit your family's needs

Welcoming front porch to greet guests in style

# UPPER LEVEL FLOOR PLAN

Owner's retreat with ample storage, spa bath & private water closet

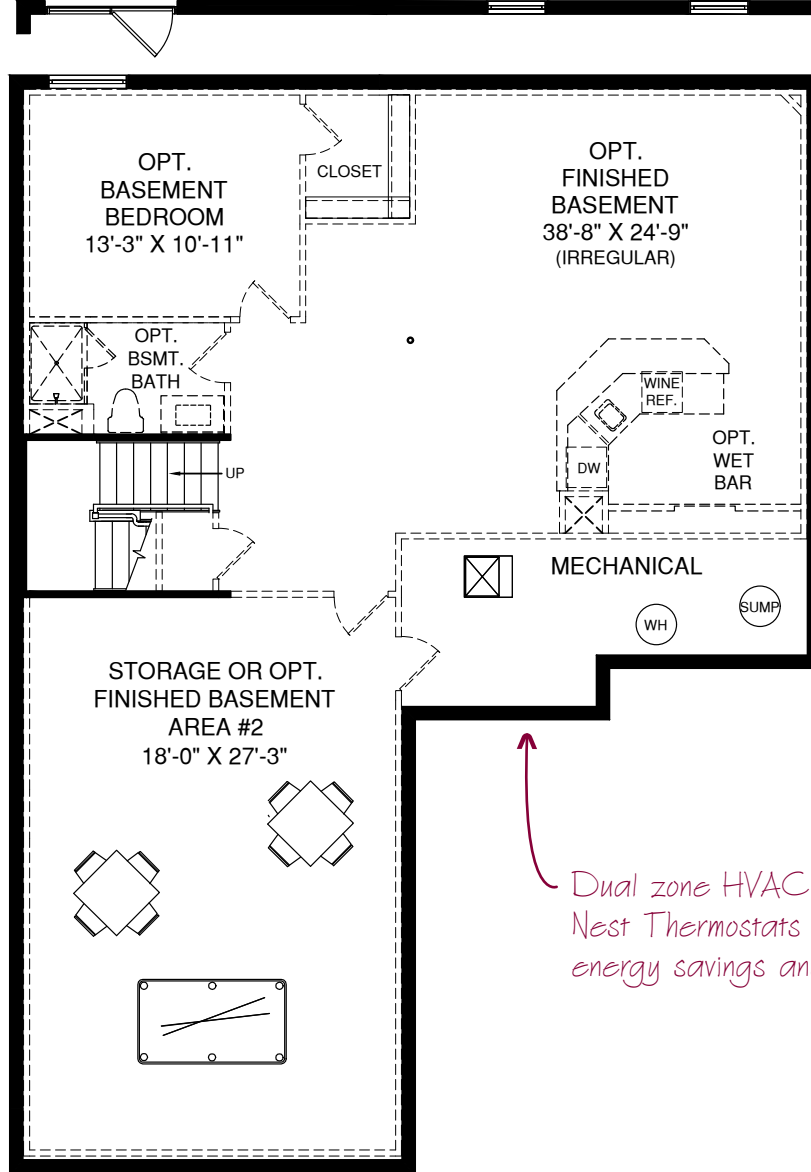


Secondary bedrooms include walk-in closets and direct access to baths

Bedroom-level Laundry with sink and base cabinets

# LOWER LEVEL FLOOR PLAN

OPT. DOUBLE PATIO DOOR SHOWN W/ OPT. WINDOWS



*With finished basement option, enjoy 9' ceilings and full bath*

*Dual zone HVAC and Nest Thermostats for energy savings and comfort*

## From the Architect

The Tyler's spacious layout provides plenty of flexibility and up to 5 generous bedrooms.



NVHomes.com

NV0317TYLE01BSMT

Although all illustrations and specifications are believed correct at the time of publication, accuracy cannot be guaranteed. The right is reserved to make changes, without notice or obligation. Windows, doors, ceilings and room sizes may vary depending on the options and elevations selected. Optional items are available at additional cost. This brochure is for illustrative purposes only and not part of a legal contract. Floor plan shown for Elevation A unless otherwise noted.

